



— Twist chain dumper



Deceleration brush in a tilting dumper

— Description

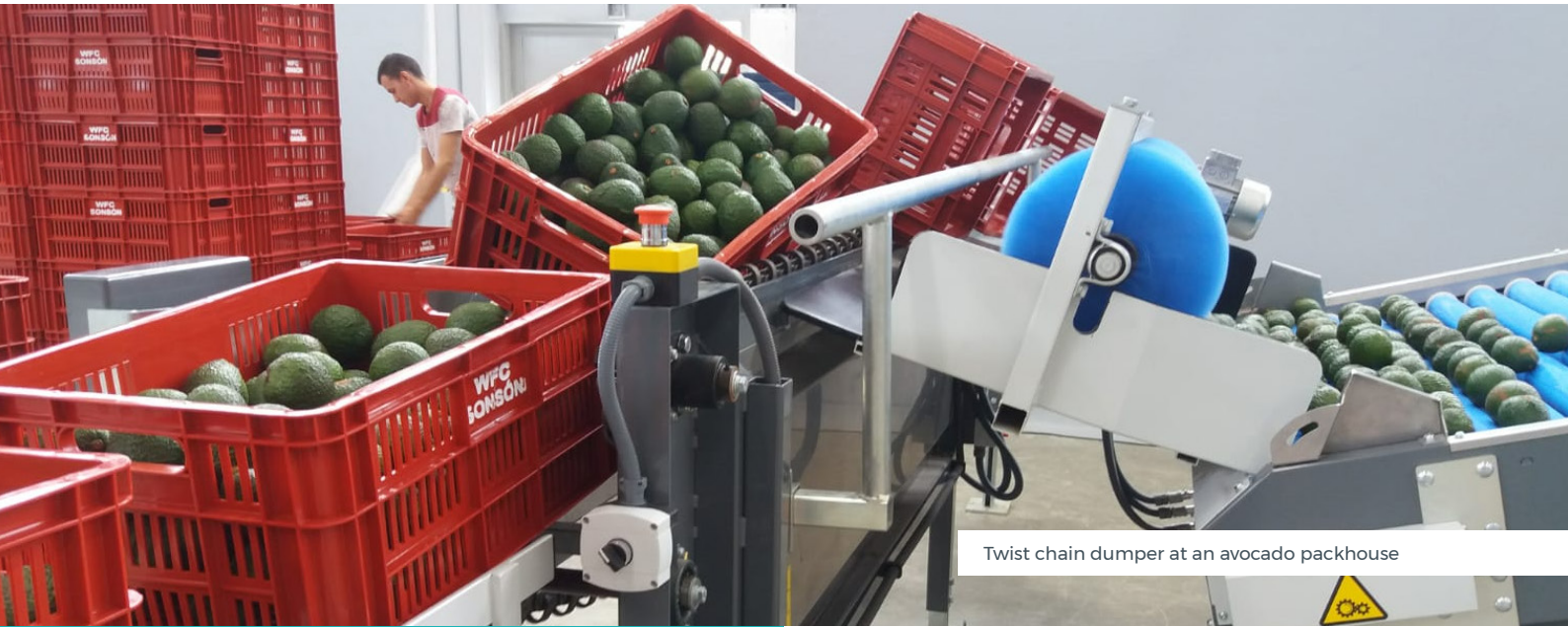
The automatic twist chain dumper is designed to empty full boxes.

The boxes are emptied by means of two chains which tilt and shake the boxes, so that the boxes are emptied completely. The product slides on a padded plate equipped with a deceleration brush for a gentle tipping of the fruit.

— Features

- The infeed chain conveyor is height adjustable, and it allows to feed boxes manually or from another conveyor, usually coming from a depalletizer.
- This twist chain dumper ensures a continuous fruit flow.
- The conveyors are controlled by a speed variator to adjust the crates tipping speed to the desired production. Highest quality standards to ensure long durability.

Twist chain dumper



Twist chain dumper at an avocado packhouse

Key specifications

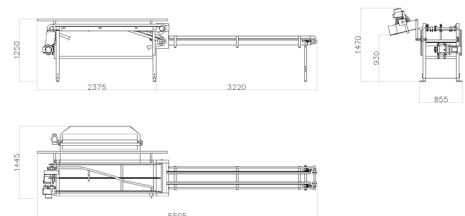
- Designed to comply with the Machine Directive of the European Union (CE) 2006/42/CE
- Maximum throughput: 1200 - 1500 crates/hour (depending on the operator's agility)
- Options: standard chain conveyor 1,5 meters long or 3 meters long. Other lengths, please consult.

Technical information

- Power - 3 phases- 380 V - 50 Hz
- Power consumption: 1,51 KW



Twist chain dumper in operation



Plant view, side view and cross section of a twist chain dumper

If you'd like to find out more or to discuss your specific packhouse requirements, please visit www.sienz.com